

Surface Area of Prisms

Surface Area - the 2D flat surface of a 3D object

think wrapping paper

Prism - has 2 parallel bases that are congruent polygons

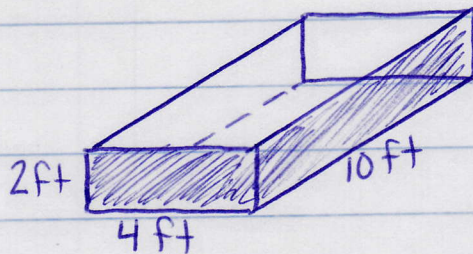
Steps

① Determine how many surfaces the object has

② Find the area of each side

Stay organized

③ Add all surface areas to find total surface area



$$\text{Front} = 4 \cdot 2 = 8$$

$$\text{Back} = 4 \cdot 2 = 8$$

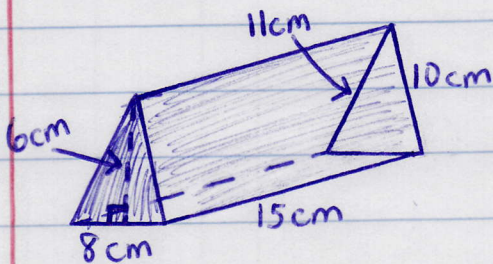
$$\text{Left} = 10 \cdot 2 = 20$$

$$\text{Right} = 10 \cdot 2 = 20$$

$$\text{Top} = 4 \cdot 10 = 40$$

$$\text{Bottom} = 4 \cdot 10 = 40$$

$$\boxed{136 \text{ ft}^2}$$



$$\text{Front} = \frac{8 \cdot 6}{2} = 24$$

$$\text{Back} = \frac{8 \cdot 6}{2} = 24$$

$$\text{Left} = 15 \cdot 11 = 165$$

$$\text{Right} = 15 \cdot 10 = 150$$

$$\text{Bottom} = 8 \cdot 15 = 120$$

$$\boxed{483 \text{ cm}^2}$$