

Greatest Common Factor Notes

What does each word mean?

Greatest: large, extreme, numerous

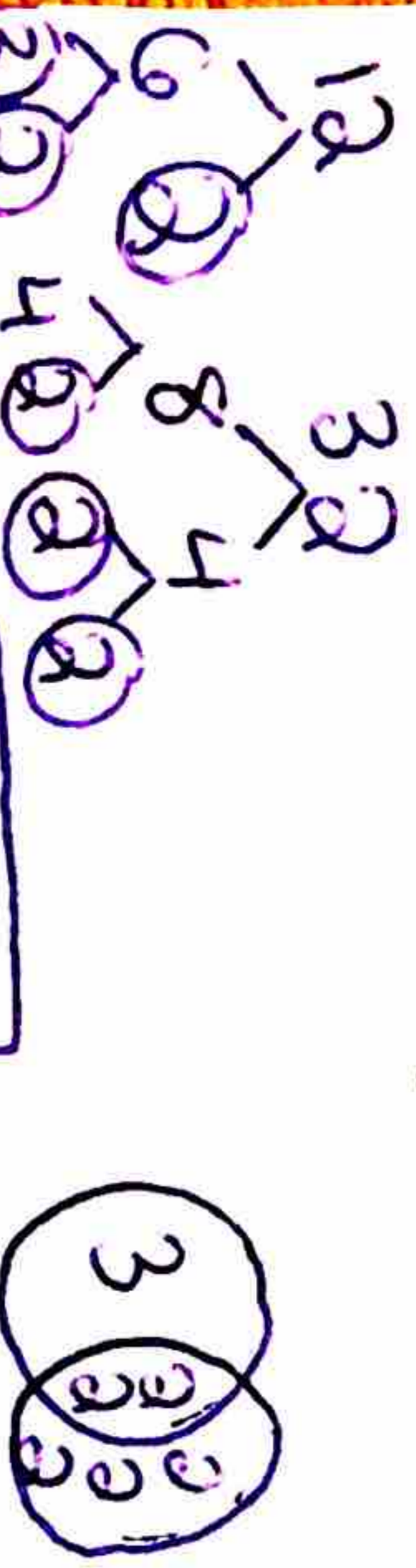
Common: belonging, shared

Factor: one of two or more numbers when multiplied produce a given product.  
Come up with a math definition that incorporates all three words

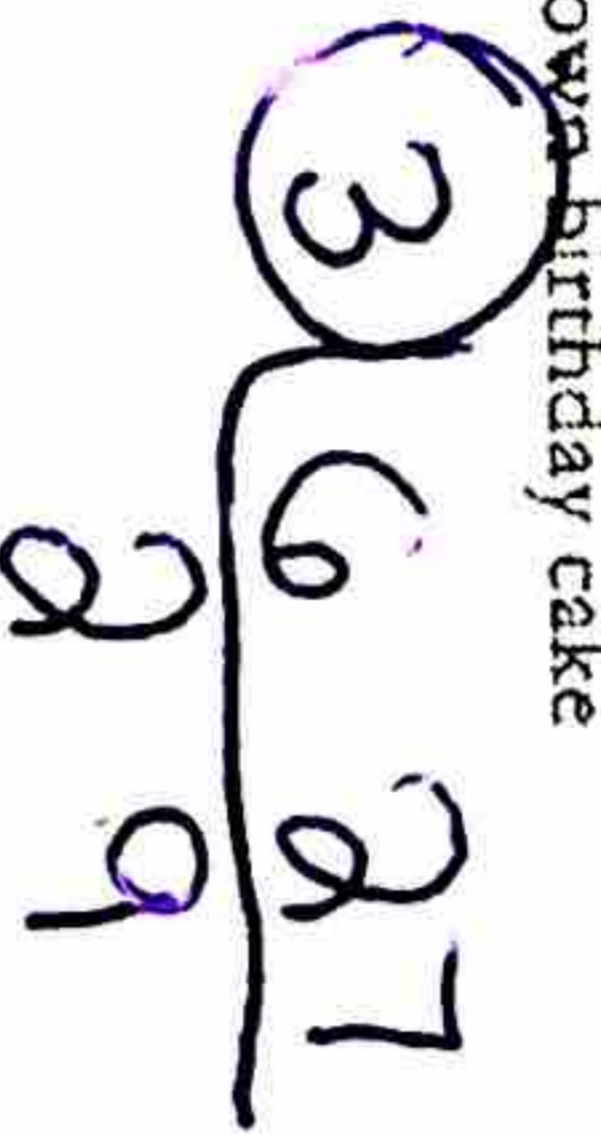
Greatest Common Factor: the largest factor of shared by 2 or more numbers.

Ex) Find the GCF of 6 and 9  
List the factors of 6: 1, 2, 3, 6  
List the factors of 9: 1, 3, 9  
3 methods

Ex) Find the GCF of 12 and 32  
Use a factor tree and Venn Diagram



Ex) Find the GCF of 6 and 27  
Use an upside down birthday cake



Ex) Find the GCF of 5 and 21 (choose your method)  
\*they have 2 sets of 2s in common  
NONE

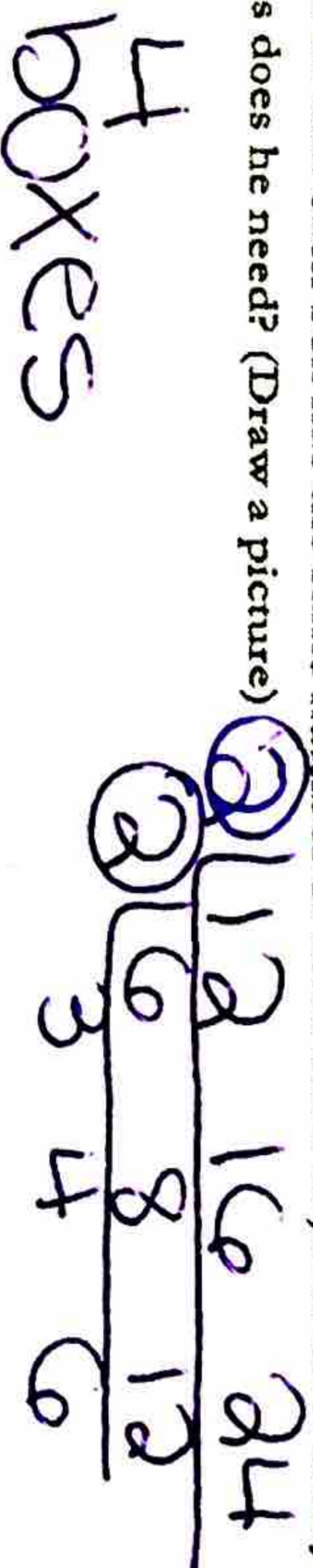
NONE

What happens when they don't have any numbers in common?

THE GCF = 1

Why

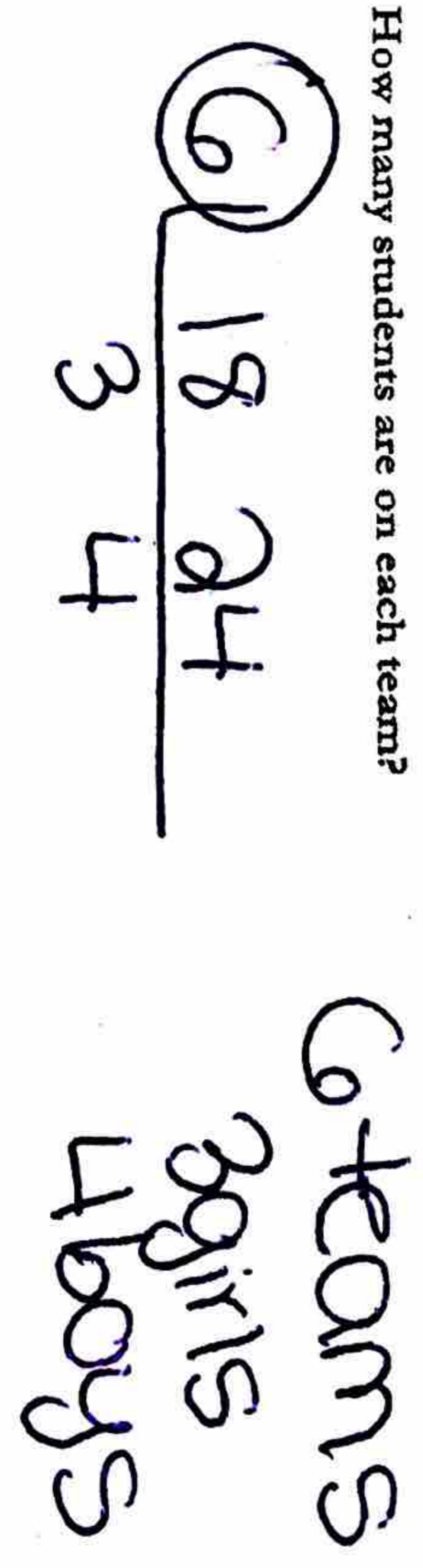
Ex) Jared has 12 jars of grape jam, 16 jars of strawberry jam and 24 jars of raspberry jam. He wants to place the jam into the greatest possible number of boxes so that each box has the same number of each kind of jam. How many boxes does he need? (Draw a picture)



How many of each kind of jam will go in each box?  
3 GRAPE 4 STRAWBERRY 6 RASPBERRY

How many jars are in each box? 13

Ex) There are 18 girls and 24 boys in Mrs. Andrew's gym class. To play a certain game, the students must form teams. Each team member must have the same number of boys and girls. What is the greatest number of teams Mrs. Andrew's can make if every student is on a team? (draw a picture)



How many students are on each team?  
6 teams  
3 girls  
4 boys  
7 students on each team